



## CORPORATE HEALTH AND SAFETY COMMITTEE – 13TH OCTOBER 2004

**SUBJECT: NEW HEALTH AND SAFETY ARRANGEMENTS**

**REPORT BY: DIRECTOR OF THE ENVIRONMENT**

---

### 1. PURPOSE OF REPORT

- 1.1 The purpose of this report is to inform Members, Management and Trade Union Safety Representatives of the latest position regarding the restructuring of health and safety across the Authority.

### 2. SUMMARY

- 2.1 The restructuring of health and safety across the Authority has now been completed.
- 2.2 Each Directorate now has a Senior Health and Safety Officer and a Health and Safety Officer. These professionals are responsible for providing advice and support and implementing Corporate policies and plans into Directorate specific guidance, as well as ensuring compliance with the arrangements.
- 2.3 The new Corporate Health and Safety Unit, consisting of a Health and Safety Manager, Senior Health and Safety Officer and two Health and Safety Officers are responsible for developing policies, the corporate health and safety strategy and the corporate action plan and will also undertake an auditing role. The focus is to ensure a consistent approach to health and safety throughout the authority. **Please see appendix 1 for an organisation Chart.**
- 2.4 To support the new arrangements a new monthly Health and Safety professionals meeting will take place providing an opportunity for all matters relating to health and safety to be discussed and to facilitate sharing of best practise across Directorates.
- 2.6 The arrangements demonstrate the Authority's commitment to revitalising health and safety and the desire to become exemplars of health and safety performance.

### 3. RECOMMENDATION

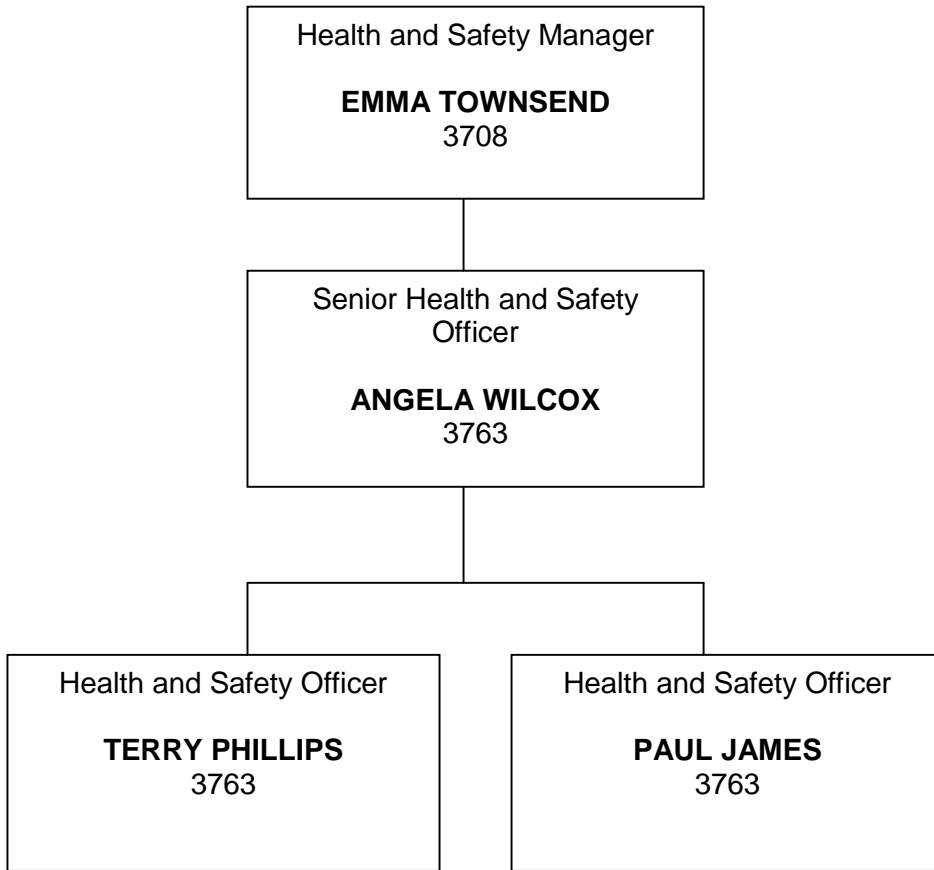
- 3.1 That the contents of the report be noted

Author: Emma Townsend, Health and Safety Manager Ext 3708  
Consultees: Steve Delahaye, Chief Trading Standards Officer Ext 5316  
Mike Workman, Commercial Service Manager Ext 5221  
Councillor Paul Ford, Cabinet Member

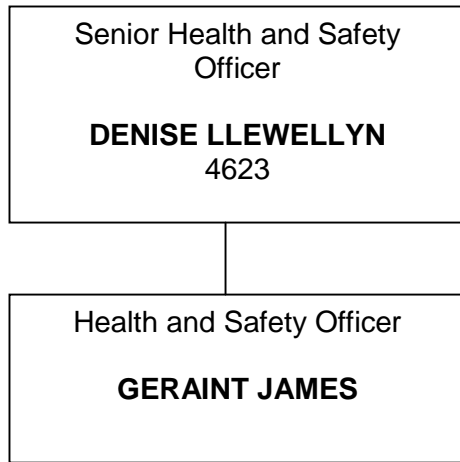
Appendix 1

**New Health and Safety Organisation**

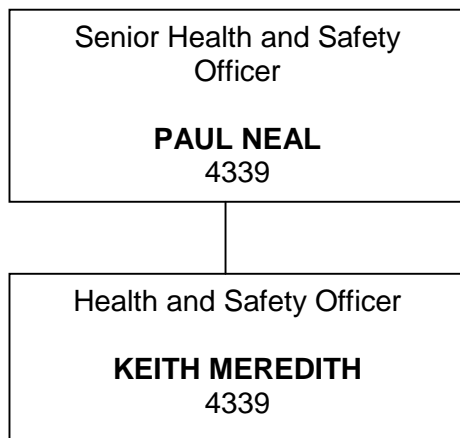
Corporate Health and Safety Unit



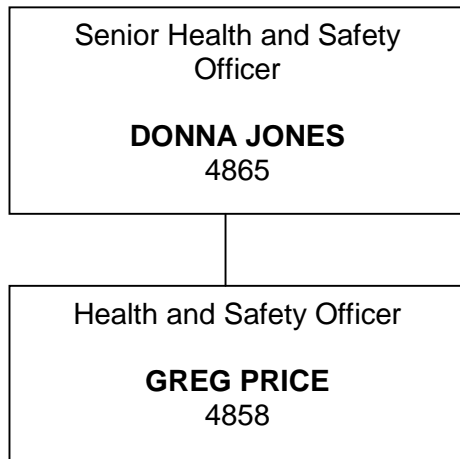
Directorate of Social Services



Chief Executive's Directorate



Directorate of Education and Leisure



Directorate of the Environment

